

RM of Dufferin 190 Quarterly Newsletter – Spring 2020

2020 MUNICIPAL ELECTION

A quick reminder, that 2020 is a Municipal Election Year Province wide and is scheduled for November 09, 2020. For the RM of Dufferin the following positions are up for election: Reeve & Councillors of Divisions 1, 3 and 5. If an election is required notice will be advertised in the Last Mountain Times newspaper and Public Notice will be posted to our Facebook page, RM of Dufferin website and at the municipal office.

Present members of the Council: Reeve: Terry Neugebauer, Councillors: Div.1 – Brian Weisbrod, Div.2 – Lorrie Zinn, Div.3 – Sheila Fishley, Div.4 – Brent Smith, Div.5 – George Riche and Div.6 – Robert Bennett.

For information on Municipal Elections candidate and voter eligibility visit:
<https://www.saskatchewan.ca/government/municipal-administration/elections/election-procedures>.



RESORT WASTE COLLECTION —

VALLEYVIEW, HIGHWOOD BEACH,

KEDLESTON BEACH & MARION HEIGHTS

The RM of Dufferin 190 once again will provide for a spring 30-yard container in May this year to assist in having resort yard sites cleaned up. This “spring cleanup” service has received many positive comments in the past couple of years and the RM is pleased to continue this service.

The 30-yard container will be delivered to the resorts on Saturday May 16 and will be available to the end of the month.

Please remember to use your residential collection bins for general household waste only. Grass clippings, lumber, furniture etc. maybe hauled to Bethune landfill/transfer station.

For the recycling of paper, cardboards, plastics, tins etc. please use blue recycling container that is located at the Railway Avenue in the Village of Bethune.

RM of Dufferin 190 Quarterly Newsletter – Spring 2020

RURAL FIRE CALLS

A kind reminder to all rural ratepayers: Please check your insurance policies to ensure there is coverage for charges relating to fire calls attended by the volunteer fire department. The Village of Bethune / RM of Dufferin #190 Volunteer Fire Department charges property owners for calls attended to in the rural municipality (ref. Bylaw 03-2019). If you have any questions regarding this matter contact your insurance agent.

CONTROLLED BURNING IN THE RM OF DUFFERIN

Any landowner planning to have a controlled burn in the RM of Dufferin must call 1-866-404-4911. Failure to report controlled burns may result in fire department response charges, if called out. Please as well contact the RM office at 306-638-3112 with the same information.

IMPORTANT! Do not burn in very windy or extreme dry weather conditions and always remember to provide adequate fire guarding before proceeding with a controlled burn.

NON-POTABLE WATER DECLARATION

Pursuant to Section 14 of the Public Health Act the Rural Municipality of Dufferin # 190 is advising that the Gladstone Well located on the NE-29-20-24-2 is a non-potable due to the water not being treated. This water should not be used for drinking, cooking, food preparation or oral hygiene purposes. Environmental Health Department Regina Qu'Appelle Region requires that we notify all ratepayers in this matter.

Spring Road Weight Restriction

Please be advised that the RM of Dufferin #190 will be following the Ministry of Highways and Infrastructure posting of the 2020 Spring Road Restriction Orders. This generally commences middle of March annually. Once the posting is advertised by the Ministry, the same will be posted on municipality's social media account and website.

All Roads within the RM of Dufferin, except for Road #1 – Bethune KSPC Mine Site – will be subject to spring weight restrictions. It is anticipated the weight restriction notice will last approximately 4 weeks.

Haulers and commercial operators are respectfully requested to abide by the weight restriction period.

If you have any questions or for more information, please contact the municipal office or visit the Ministry of Highways and Infrastructure website:

<https://www.saskatchewan.ca/government/government-structure/ministries/highways-and-infrastructure>.

WASTE DISPOSAL SITE OPERATION

The waste disposal site/transfer station in Bethune, SK will start its operation as of April 01, 2020.

The site will be open usual hours: Saturdays from 10:00 AM to 4:00 PM,
Wednesdays from 6:00 PM to 8:00 PM.

Charges for loads hauled as follows:

Small loads - \$5.00; vehicles up to ¾ ton with the trailer - \$15.00;
¾ to 1 ton vehicles - \$50.00; 3 ton and up - \$150.00; white goods -
\$5.00 per one appliance.

LORAAS DISPOSAL – CONTAMINATION ALERT

Crisis is perhaps too strong a word, but contamination of recycle material is, in general, a growing problem in North America. In 2018 China stopped accepting recycle materials from around the globe. The result is an oversupply of recyclables, driving values down and processing costs up. The need for maintaining and improving the quality of what is collected is greater than ever.

As you know, recycling processing relies, in part, on separating acceptable materials from garbage. Material Recovery Facilities (MRFs) are being vigilant in reducing the contamination levels in the materials they are marketing; however, this takes more time and expense.

In order to maintain a strong and effective recycling program, we need your cooperation. Any items listed as acceptable can go in the 'BLUE' recycle cart and any remaining items go in the garbage or an alternative recycling facility, e.g. light bulbs and metal parts. Contaminated recycle loads may result in additional fees being charged back to the municipalities.

If you have any doubt whether or not an item can be recycled, please contact Loraas or at a minimum, *when in doubt put it in the garbage.*

Attached is a helpful poster which outlines our recycling program. This poster details what can and cannot be put in the blue cart or bin.

Thank You, we appreciate your cooperation as we attempt to keep recycle material clean and costs to the municipalities low.


Related News Links:

<https://www.cbc.ca/news/technology/recycling-contamination-1.4606893>


<https://www.theglobeandmail.com/news/national/chinese-ban-on-foreign-recyclables-leaving-some-canadian-cities-in-the-lurch/article37536117/>



SINGLE STREAM CURBSIDE RECYCLING

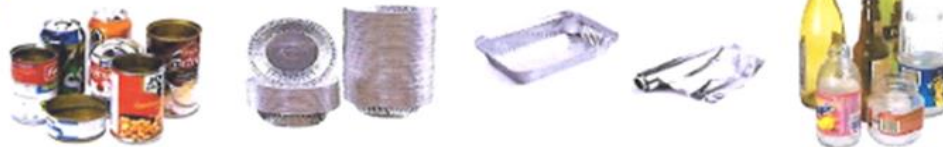
 **Cardboard, Boxboard, Office Paper, Newsprint, Junk Mail, Magazines and Catalogues**



 **Plastic Containers, Plastic Milk Jugs, Milk and Juice Cartons**
(No "Clam Shell" Type Food Containers labelled #1) (No oil containers or chemical jugs)



 **Tin, Aluminum and Glass** Rinse all items – labels can remain on



 **ITEMS NOT ACCEPTED**

 Clamshell Containers	 Lightbulbs	 Plastic Bags and Stretch Wrap	 Wood and Metal Scrap	 Diapers
 Styrofoam and Plastic Utensils	 Hoses and Rubber Items	 Toys and Clothing	 Food and Garbage	

www.loraasdisposal.com